

AccuWrap™ - Food-Grade Flow Wrapping System



Building-Block Modularity™

gives short and long term high customer value with SKU versatility and dynamic future business change without buying new equipment.

Your value is a machine that can **change** to fit other applications without buying new machine.

Your value is **modular redundancy** for high productivity.

Your value is **reduced maintenance** time with modular accessibility.

Your value is **increased run time, increased shipments and higher profits.**

Modular in-feed Conveyor for rapid change to fit various SKU's

- Single belt narrow
- Dual belt wide
- Flat belt versions
- Lug Style
- Your custom design

Standard hard film flow wrap for

- Overhead or inverted film feed
- 1, 2 or 3 servo fin modules
- Various fin patterns
- Band fin seal

Modular Forming box for no tools changeover

- Various sizes
- Fixed former
- Adjustable former
- Overhead feed
- Inverted feed
- Box or Wing Style

Modular crimp seal assembly for

- Standard rotary knife end seal
- Hot knife rotary for shrink film
- Long dwell transversal system
- Various crimp and knife patterns

Modular 36" unwind for various SKU's

- Overhead Surface unwind
- Inverted Surface unwind
- Standard powered nip roll

No Tools Changeover - Increases run time

- No tools conveyor pitch changeover
- No tool rail spacing change
- No tools conveyor belt release
- No tools Modular Forming Box

Modular shrink film linear seal for different package styles

- Overhead or inverted film feed
- Static lap seal
- Heated lap seal
- Static/heated lap seal combo
- Shrink film fin seal
- Vacuum belt
- Band fin seal

No-Particle-Trapping - for fast, easy assessable cleaning

- Open concept design
- Rugged, open frame allows food particles to fall through
- Totally wash down for all conveying
- Wet wipe down of sealing sections
- No tools release levers for cleaning



GEORGE GORDON ASSOCIATES, INC.

COMPREHENSIVE PACKAGING SYSTEMS

Manufacturing Quality Flow Wrappers For Over Eighteen Years

12 Continental Blvd. , Merrimack , NH 03054

Phone: 603-424-5204 Fax: 603-424-9031

E-mail: rond@ggapack.com Website: www.ggapack.com

Model: FG-2000W
FG-2000N

AccuWrap™

FOOD-GRADE INVERTED WRAPPER SYSTEM

The AccuWrap FG-2000 is a multi-axis, servo-controlled, food-grade wrapper with wash-down capability for the most food-friendly wrapper in the industry, with the ultimate in modularity for easy maintenance, cleaning, and flexible use.

Drawing on our extensive experience in tough wrapping applications, the AccuWrap Food Grade Inverted Horizontal Wrapping System is designed for high speed, high efficiency, and easy maintenance. The stainless steel construction is designed to the “no particle trapping” criteria, with its rugged, open frame allowing food particles to fall through, and accommodating wash down for all conveyors and wet wipe down of sealing sections.

The modular construction allows removal of all modules providing the maximum in accessibility, enabling an even more thorough spill clean up or for expedient changeover and versatility for future business requirements. Rails lift up; conveyor belts snap out; conveyors slide out; the former is fast change; and even the fin wheels are modular. The AccuWrap Inverted Horizontal Wrapper offers the most **Food-Friendly** wrapping system on the market today.



Exclusive Features:

- Stainless steel construction for wash and wipe cleaning
- Modular construction for easy clean and plug-in versatility
- Open construction for limited food particle trapping
- Advanced electronics for production compatible operation
- Allen-Bradley ControlLogix included as standard
- Multi-axis servo system optimizes all functions independently
- Full color touch screen for easy operator interface
- On-screen and remote diagnostics to reduce downtime
- Servo-controlled for precision product placement
- Servo-controlled sealing head for high accuracy seal placement
- Up to 400 cycles per minute for high speed packaging
- Small footprint for space efficiency (Basic: 13' long x 5' wide)
- Film width from 12" to 32" for large range of products



GEORGE GORDON ASSOCIATES, INC.

COMPREHENSIVE PACKAGING SYSTEMS

MEMBER
PMMA
USA

FG-2000W 

FG-2000N

FOOD-GRADE INVERTED WRAPPER SYSTEM

The advanced electronic features for production-compatible operation make the AccuWrap perfect for applications across the food packaging industry. The system features independently adjustable servo control of linear fin sealing, main cross sealing, rotary knife, conveyors and unwind, which provides the ultimate in control for packaging production.

The food-friendly AccuWrap is also user friendly. With the standard Allen Bradley servo system, the system offers all the features for high production throughput as the communication-friendly controller provides complete line supervision. Over 100 recipes for touch screen retrieval make product changeovers as easy as selecting your favorite TV channels. Product position monitoring for **Out Of Position/No Cut** and **No Product/No Bag** means more good packages ready to ship.

The modular design, wash down capability and small footprint make the system ideal for food applications from pizza to food trays, individually wrapped jumbo cookies and many other food applications across the food packaging industries. For an evaluation of your application please make your request via telephone, 603-424-5204; or e-mail, sales@ggapack.com.



The open design of the FG-2000W makes cleaning and maintenance quick and easy.

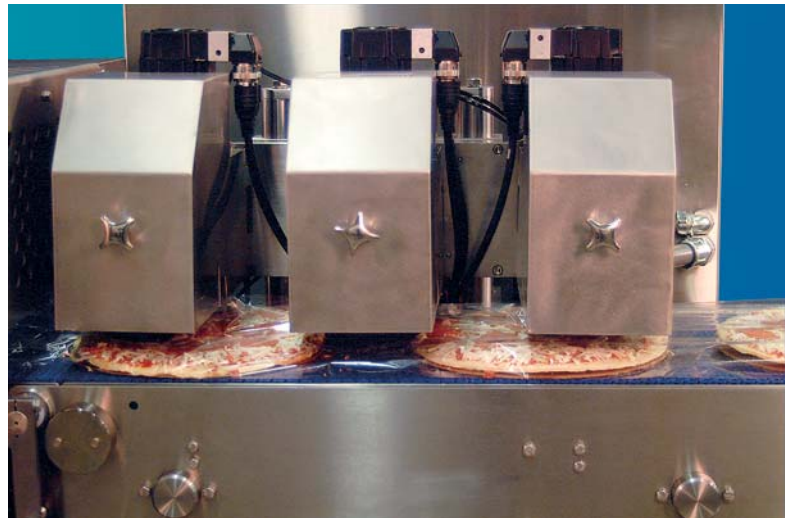
Don't forget to browse our website: www.ggapack.com.



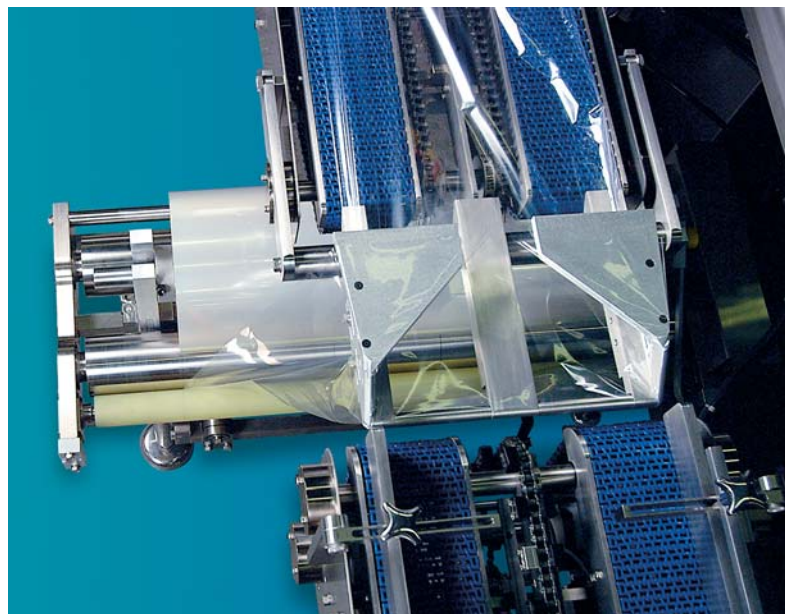
Outfeed end of FG-2000W

Options:

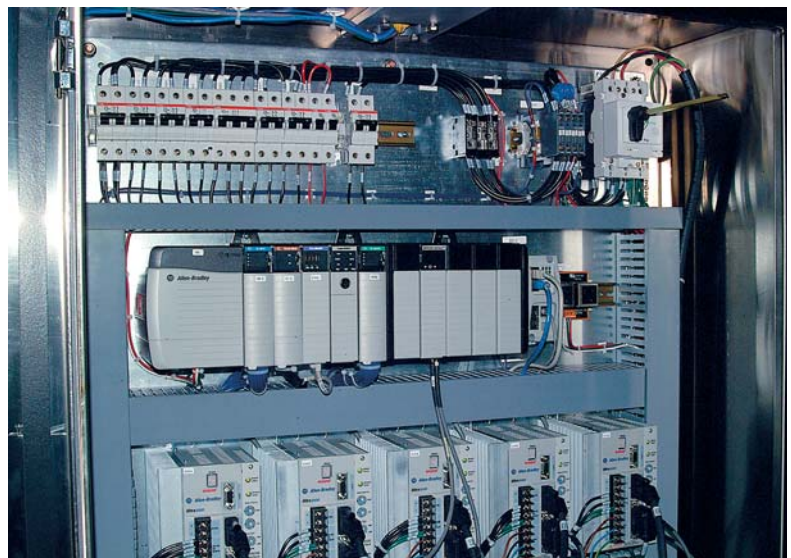
- 1 or 2 up crimper head
- Choice of crimper width from 6 inches to 16 inches
- Four choices of fin seal
- Option for registration for preprinted and opaque film materials
- Straight or zigzag knife
- Choice of film width from 12 inches to 32 inches
- Narrow web version available



Close-up of finwheels (pizza wrapping application shown).



The surface-style, powered unwind is unique to the GGA FG-2000W.

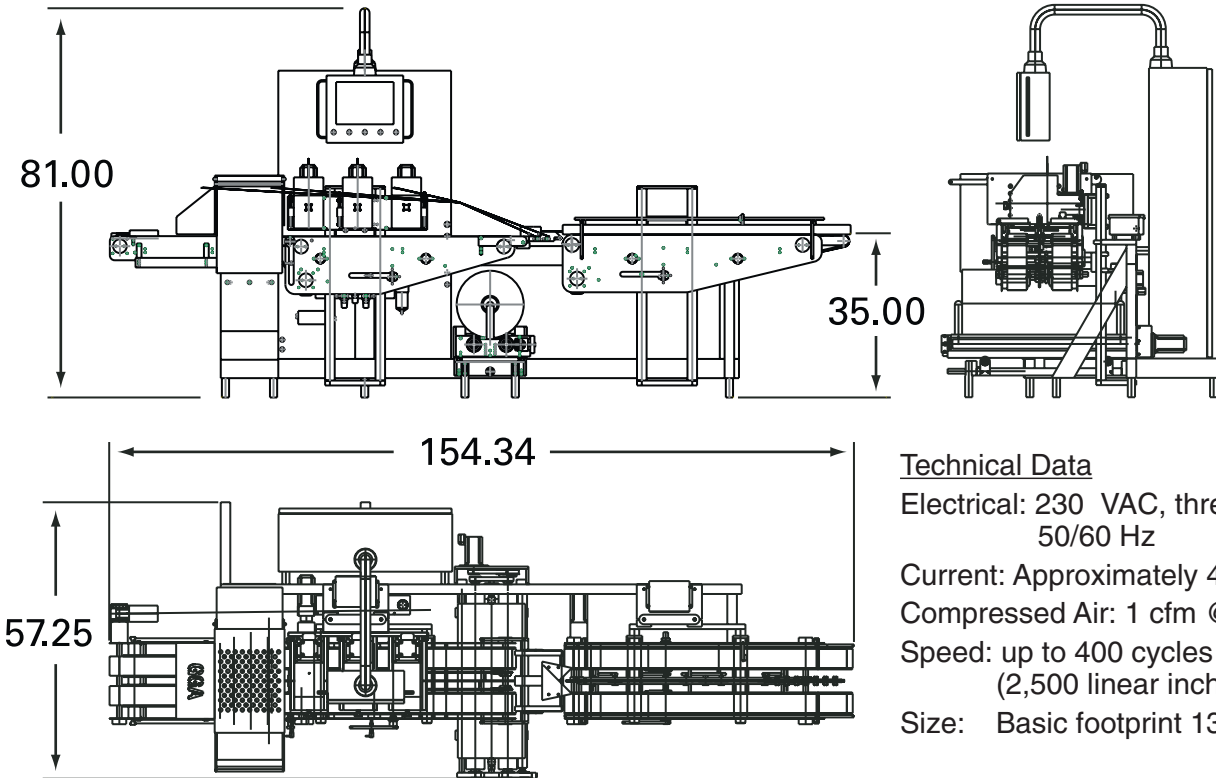


All electrical panels are UL-approved and built in George Gordon's facilities (CE certification optional).

MODEL: FG-2000



FOOD GRADE INVERTED WRAPPER SYSTEM



Technical Data

Electrical: 230 VAC, three-phase, 50/60 Hz

Current: Approximately 40 Amps

Compressed Air: 1 cfm @ 80 PSIG

Speed: up to 400 cycles per minute (2,500 linear inches per minute)

Size: Basic footprint 13' x 5'

Features:

- Food grade, all stainless steel construction for wash/wipe down cleaning
- Modular assemblies for expedient configuration change and plug-in versatility
- Product position monitoring for out of position/no cut
- No product/no bag
- Allen-Bradley ControlLogix standard for best electronic options
- Multi-axis servo system to optimize operation of all functions independently
- Precision cut and seal with servo-controlled crimper for high accuracy
- Powered Seated Surface Unwind for the ultimate in web control
- UL Approval or CE Mark option

Order Number

FG-2000X -X -X -X -X

W - Servo-controlled 12" to 32" wide film

N - Servo-controlled 8" to 16" wide film

-1: 1-Up crimper

-2: 2-Up crimper

-S: Straight cut knife

-Z: Zigzag cut knife

-L: 1/8" wide straight line crimp pattern

-I: Inline crimp pattern

-C: Cross crimp pattern

-L: 1/8" wide straight line fin seal pattern

-I: Inline fin seal pattern

-C: Cross fin seal pattern

-K: Crosshatch fin seal pattern

-1B: Adjustable 1 belt for narrow web for 5'

-2B: Adjustable 2 belt for wide web for 5'

-F: Sawtooth under fin feed chain option

-#: Conveyor section

-#: flight spacing

-SU: Single powered unwind

-DU: Double powered unwind

-SO: Single powered unwind overhead*

-DO: Double powered unwind overhead*

*SO and DO - Narrow only

George Gordon Associates, Inc.

12 Continental Boulevard

Merrimack, NH 03054

Call 603-424-5204

FAX: 603-424-9031

E-mail: sales@ggapack.com

Web: www.ggapack.com