

Model HSPD-338

HIGH SPEED PEN DISPENSER

The Model HSPD-338 is a portable, self-contained, heavy-duty machine, designed to deliver pens and other non-uniform cylindrical products in groups to other packing operations. It operates at speeds up to 380 parts per minute depending on item and application. A delivery trigger pulse discharges a predetermined count of product to a waiting operation and automatically recharges the delivery chamber.

The HSPD-338 will accept pens with either uniform or random cap orientation, with or without a clip. Specific product counts can be easily programmed into the dispenser. The dispenser can also feed multi-lane blister sealers using a cross conveyor.

Maximum flexibility and reliability are designed into the HSPD. A single drive motor provides high reliability and low maintenance, and guarantees smooth, reliable dispensing. For greater packaging speeds, two or more machines can be used.



Exclusive Features

- Cylindrical product delivery up to 380 parts per minute
- Product sizes to 1/2" diameter by 6" long
- Single drive motor provides smooth and reliable product delivery
- Automatic delivery chamber recharge
- Delivery verification



GEORGE GORDON ASSOCIATES, INC.

COMPREHENSIVE PACKAGING SYSTEMS

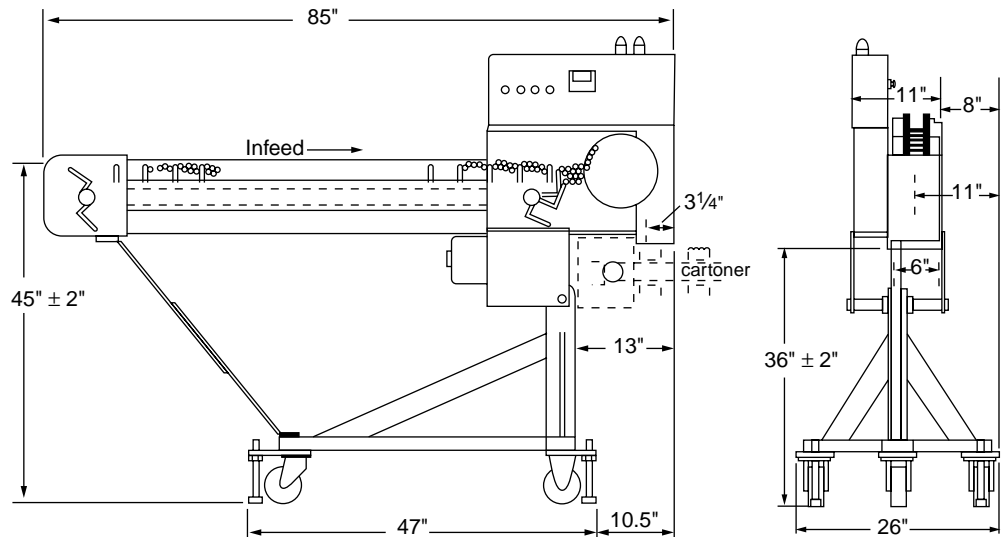


Model HSPD-338 HIGH SPEED PEN DISPENSER

Model: HSPD-338

Features:

- Cylindrical product delivery up to 380 parts per minute, depending on product
- Product sizes to 1/2" diameter by 6" long
- Single drive motor provides smooth and reliable product delivery
- Automatic delivery chamber recharge
- Programmable counter
- Large infeed hopper capacity



Options:

- Cross Conveyor
- Carousel Transfer Mechanism
- Shuttle Transfer Mechanism
- Tamper Assembly

Technical Data

Electrical: 115 VAC, 50/60 Hz, single phase

Current: Approximately 10 Amps

Compressed Air: 2 cfm @ 80 PSIG

Order Number

HSPD-338-X-X-X

-H: Horizontal Infeed

-V: Special Vertical Hopper

-A: Accumulator

-C: Cross Conveyor

-K: Carousel Transfer Mechanism

-S: Shuttle Transfer Mechanism

-T: Tamper Assembly

-H: High Speed 48 Tooth P/U Wheel

-P: Add 36 Tooth P/U Wheel

George Gordon Associates, Inc.

12 Continental Boulevard

Merrimack, NH 03054

Call 603-424-5204

FAX: 603-424-9031

E-mail: sales@ggapack.com

Web: www.ggapack.com